

Center for Innovation in Teaching & Learning







Kelvin Norman, Ed.D.



Session Resources

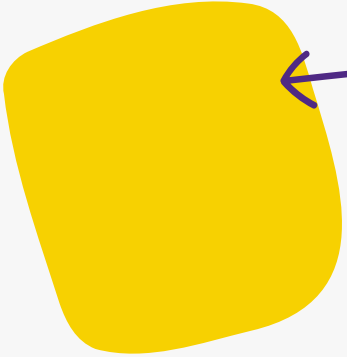
Session will be recorded

Slide deck will be shared

Check out our [CITL website](#)

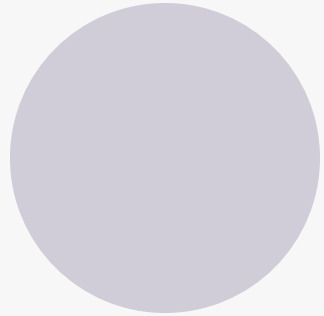
Every Tuesday the CITL offers [workshops](#)

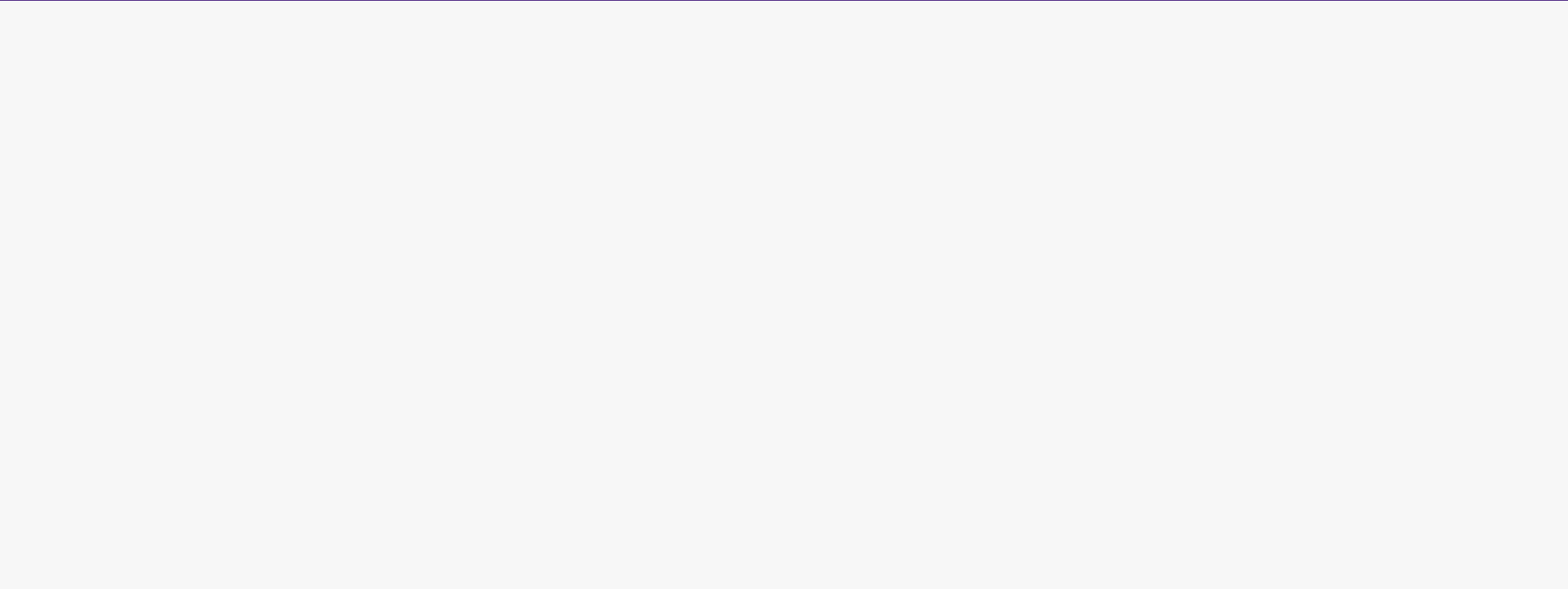
We will be in the chat to answer any questions.

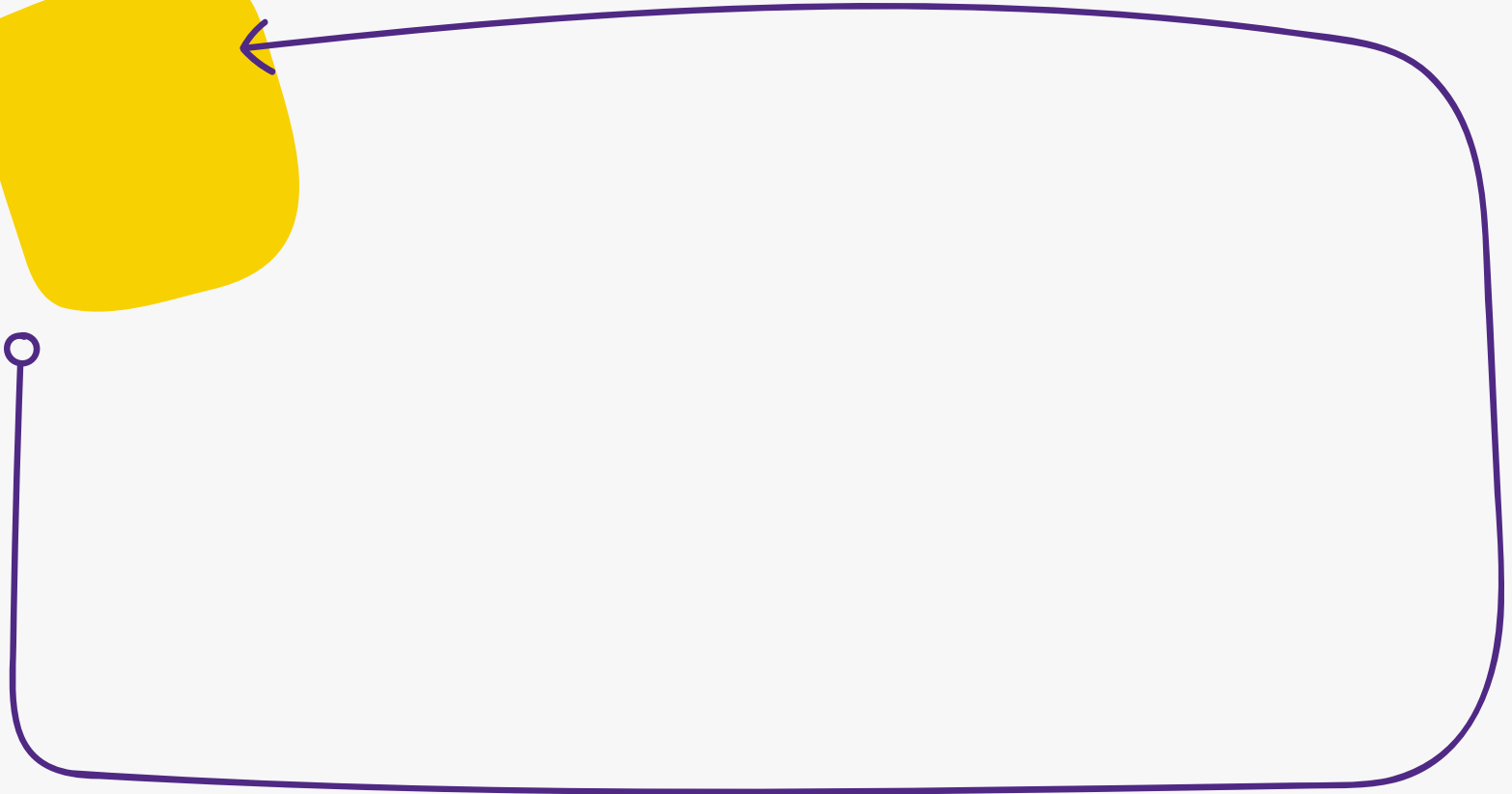
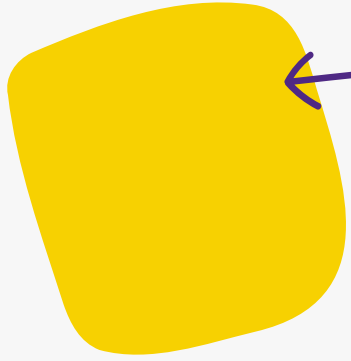


Course Consultations

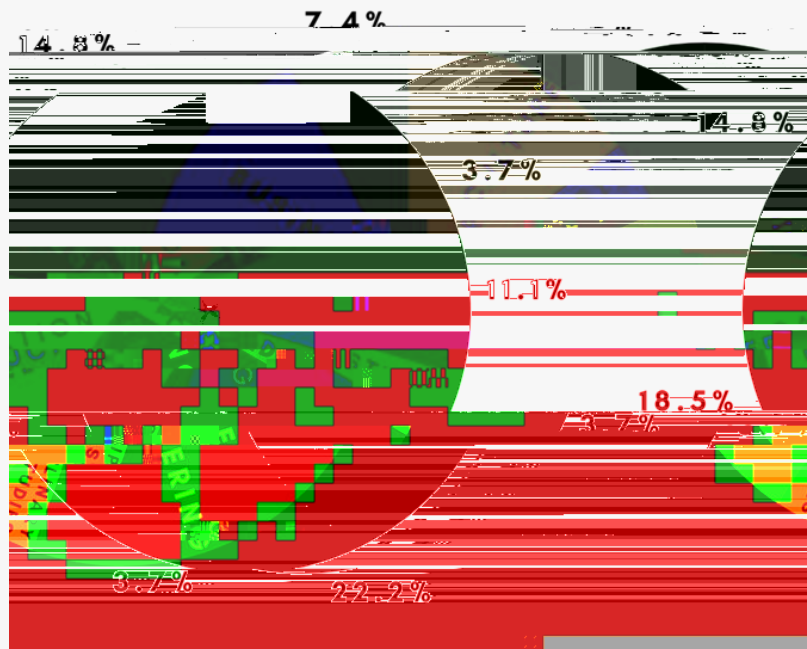








-
-
-
-

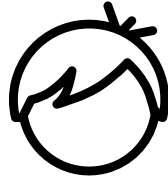


Faculty



-
-
-

Student



-
-

CITL Facilitator

-
-

Things to Note:



Survey Questions



support

like



dislike

hinder



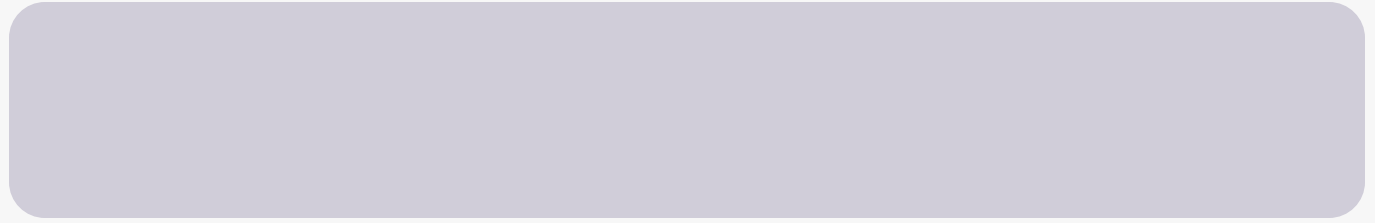
suggestions

enhance

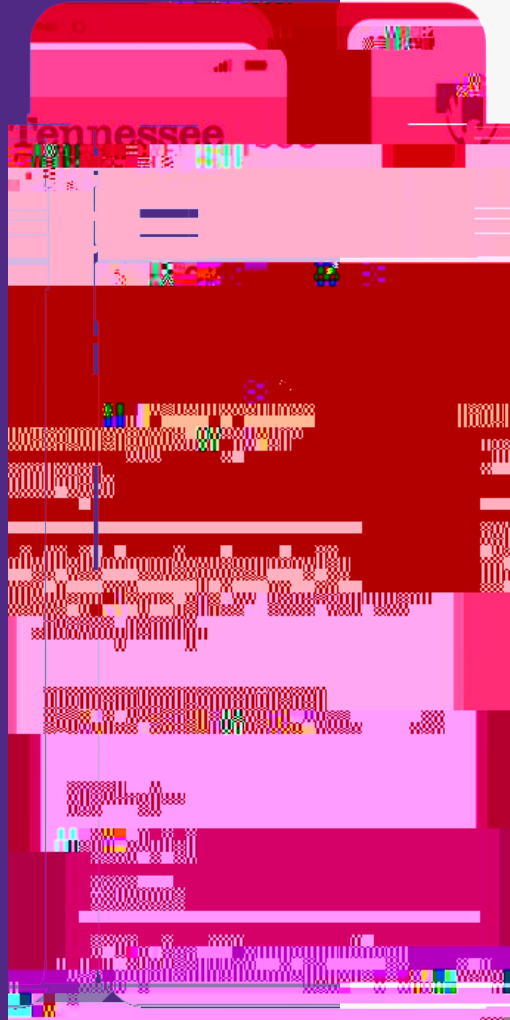
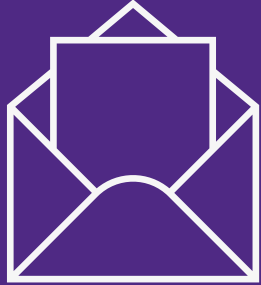


improve

Day of SGID:

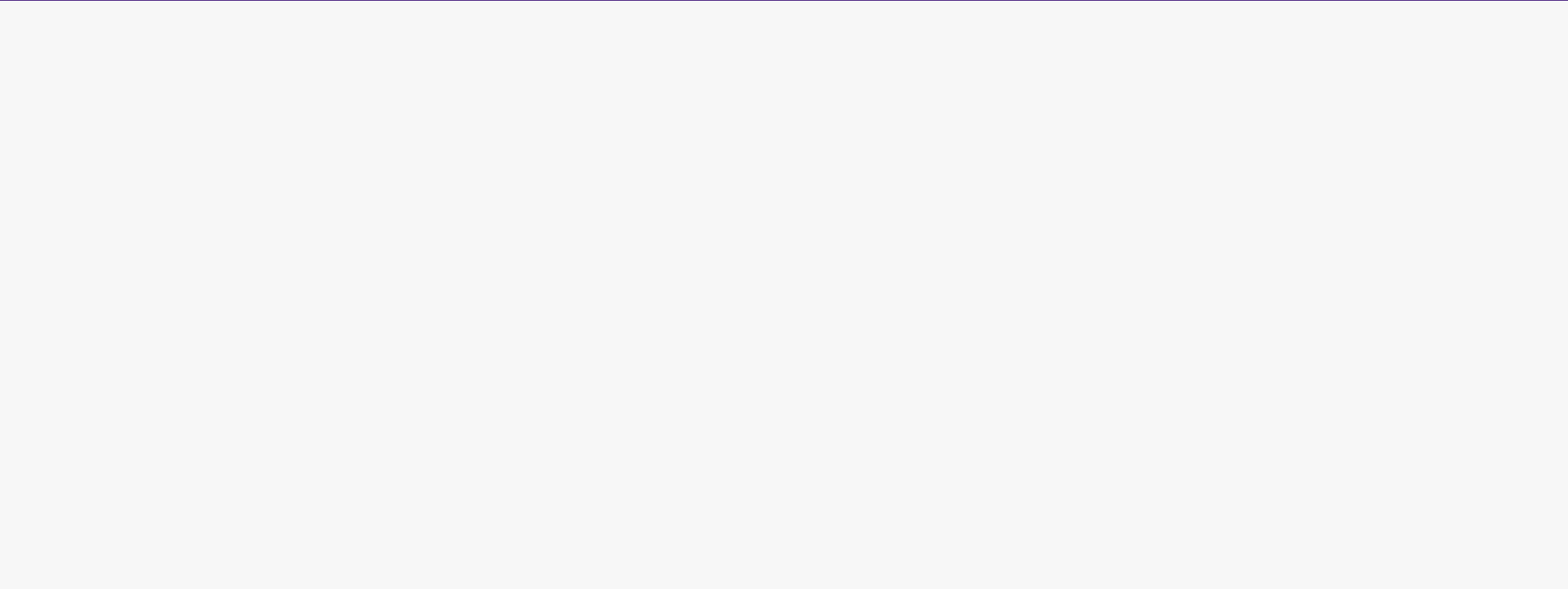


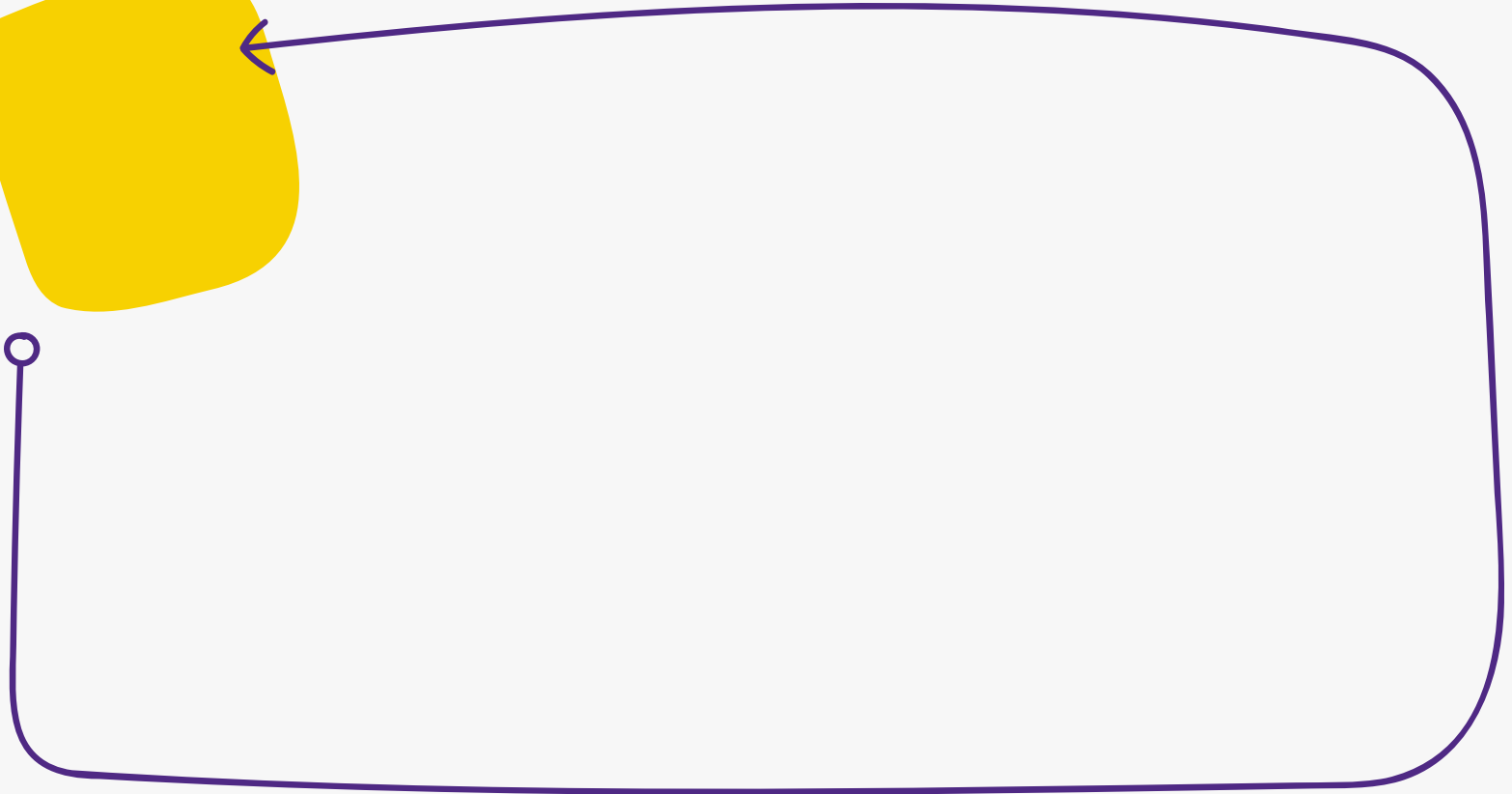
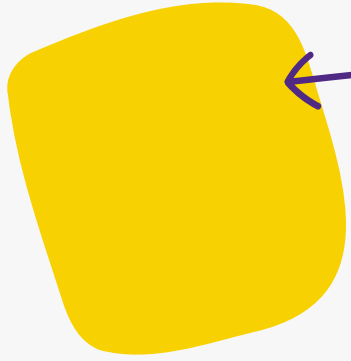
After SGID:

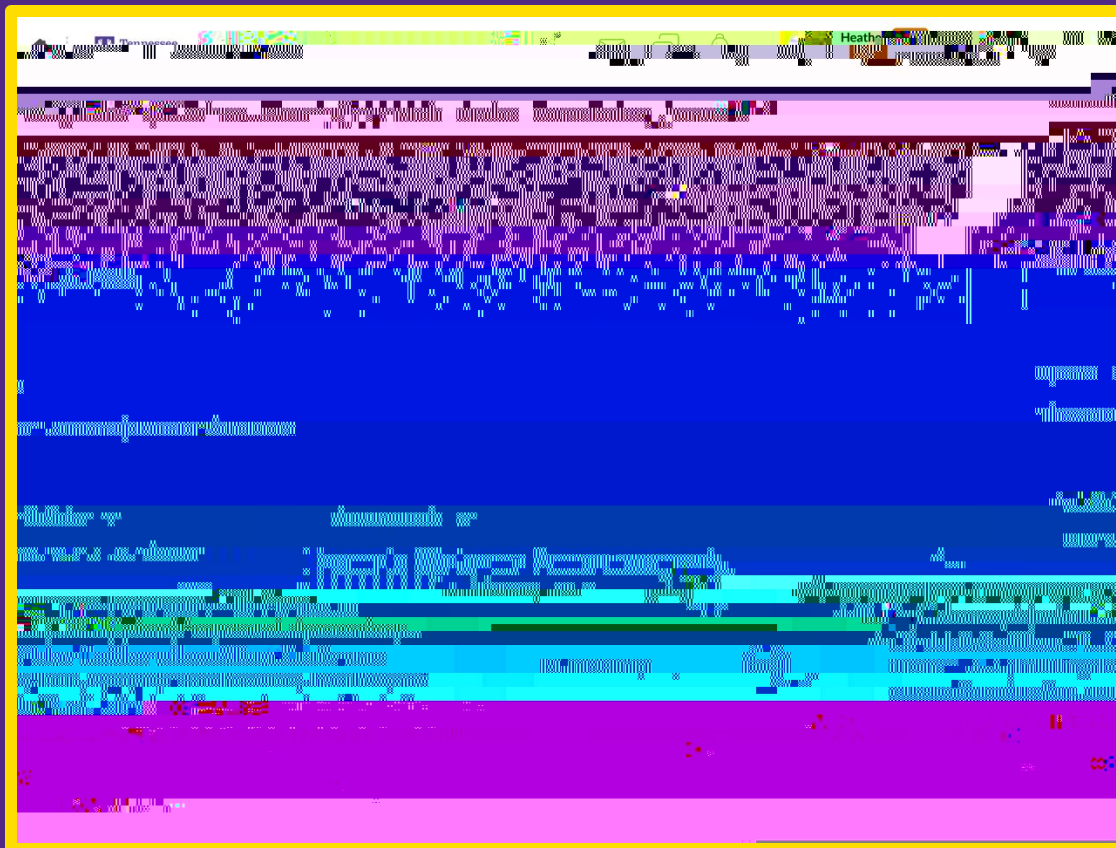












The screenshot shows a Blackboard LMS interface for a course titled "Tech-Direct". The top navigation bar includes a home icon, the Tennessee Tech logo, the course name "Tech-Direct", and user information for Heather Rippetoe (as Banner_Student). The main navigation menu contains links for Content, Assignments, Quizzes, Discussions, YuJa Media, Grades, Course Tools, and Resources. The course content area features a "100% Complete" badge and a progress bar indicating that 12 of 12 topics are complete. A "Download" button is visible. The right sidebar contains links for Course & Instructor Information, Student Policies, Student Services, and Technical Support. The bottom of the page shows a "Student Policies, Student Services, & Technical Supports" section with a play button icon.

5


Ed-Tech Support


Instructional Technology



[Redacted]

 [Redacted]

 [Redacted]

 [Redacted]

Helpful Forms & Contact

- _____
- _____
- _____

--	--

Thank You!

Questions, Comments, Concerns?

Using AI to
Reduce Your Academic
Workload



Resources

- _____
- _____
- _____
- _____
- _____
- _____