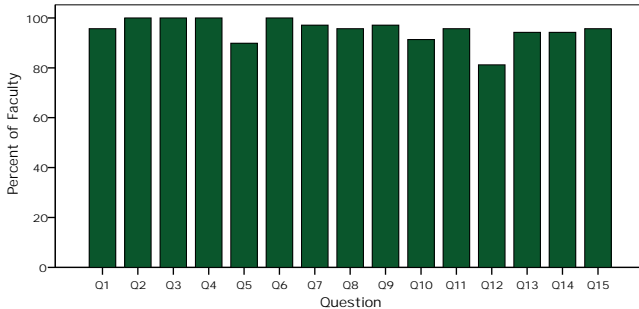


CAT · Instrument Technical Information

Face Validity

The CAT instrument was designed to measure those components of critical thinking and problem solving that faculty across disciplines think are most important. The graph below shows the percent of faculty that think each question is a valid measure of critical thinking. These evaluations include a wide variety of disciplines from six institutions involved in a research project to evaluate and refine the instrument.



* Significant at .01 level; ** Significant at .001 level

Scoring Reliability

Criterion Validity

Criterion validity for a test of this type is difficult to establish, since there are no clearly accepted measures that could be used as a standard for comparison. Since the CAT Instrument is designed to assess a broad range of skills associated with critical thinking, we looked for reasonable but moderate correlations with CAT. The 0.501, 0.516*, 0.562*, and 0.295*



* correlations significant, .01

Other Measures of Critical Thinking

	CCTST (California Critical Thinking Skills Tests)	CAAP Critical Thinking Module
--	--	----------------------------------

CAT 0.645* 45 true validity of the CAT validity and instrument.